



# THE RESERVE

MAMMOTH LAKES



## RENDERINGS AND FLOOR PLANS

### SKYLINE – HOME THREE





THE RESERVE  
MAMMOTH LAKES



SKYLINE – HOME THREE



# THE RESERVE MAMMOTH LAKES



## FEATURES

- 3801 sq. ft. of living space
- Five bedrooms
- 2 Car Garage
- Gourmet kitchen with premier appliances
- Private decks
- Modern Mountain home design
- Central Air-Conditioning and Heat
- Open concept floor plans
- Low VOC paint and finishes
- Exteriors of rusticated stone, western larch, and standing seam metal
- Both indoor and outdoor dining areas
- High-efficiency appliances and fixtures
- Natural stone and wood accented interiors
- Private gated community
- Energy efficient LED lighting and controls
- Engineered hardwood flooring

## AMENITIES

- Short term rentals approved
- Limited Edition Mammoth Black memberships available
- Clubhouse with pool and fitness area
- Minutes from the Village
- Shuttle service
- California's best skiing and snowboarding
- World class golf
- Fishing, swimming, hiking, tennis, boating
- Dining, shopping, & spas
- Off-roading & motorcycle riding
- Scenic gondola rides
- Helicopter tours
- Miniature golf
- Parks, playgrounds, and skateboarding parks
- Concerts, food and wine festivals, and special events
- Sight-seeing & trail running
- Kayaking & canoe tours

## SKYLINE – HOME THREE





THE RESERVE  
MAMMOTH LAKES



SKYLINE – HOME THREE



THE RESERVE  
MAMMOTH LAKES



SKYLINE – HOME THREE





THE RESERVE  
MAMMOTH LAKES



SKYLINE – HOME THREE

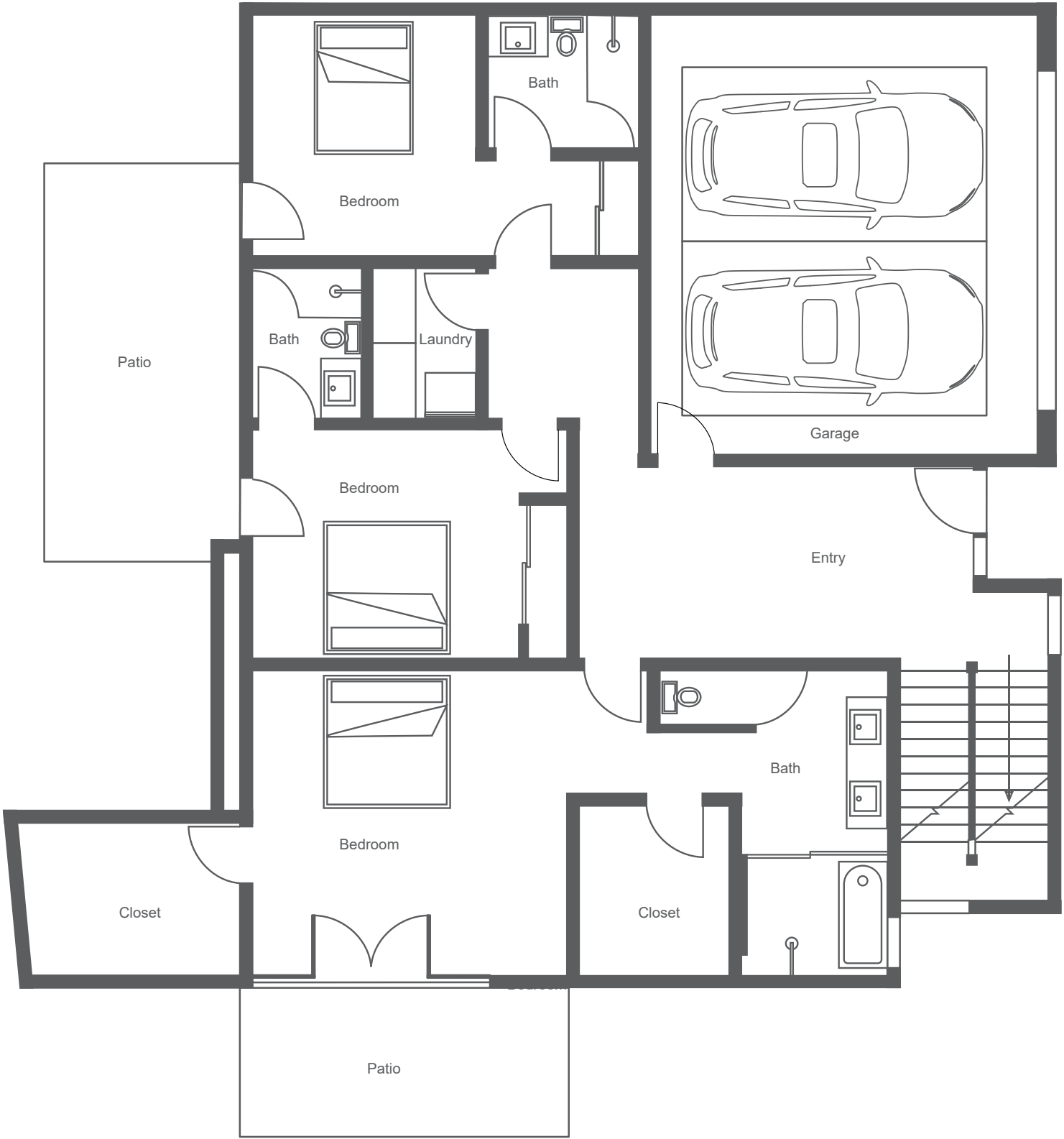


THE RESERVE  
MAMMOTH LAKES



SKYLINE – HOME THREE

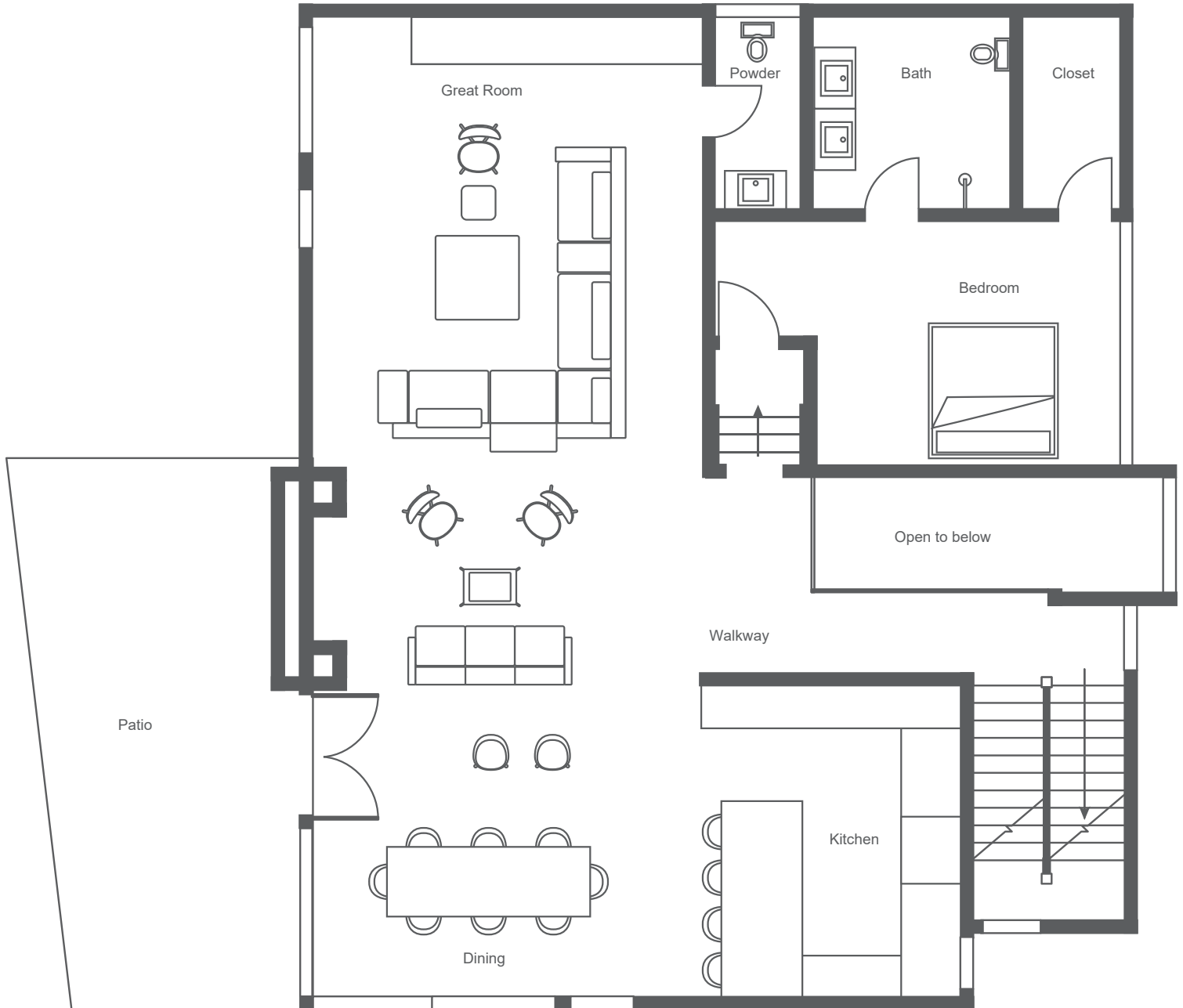
SKYLINE – HOME THREE  
FIRST FLOOR PLAN



The developer reserves the right to make modifications. All dimensions and areas shown on this plan are not to scale and are approximate. "As built" dimensions and areas may vary from those shown. Broker/Agent does not guarantee the accuracy of the square footage, lot size or other information concerning the conditions or features of the property provided by the seller or obtained from Public Records or other sources. Buyer is advised to independently verify the accuracy of all information through personal inspection and with appropriate professionals.

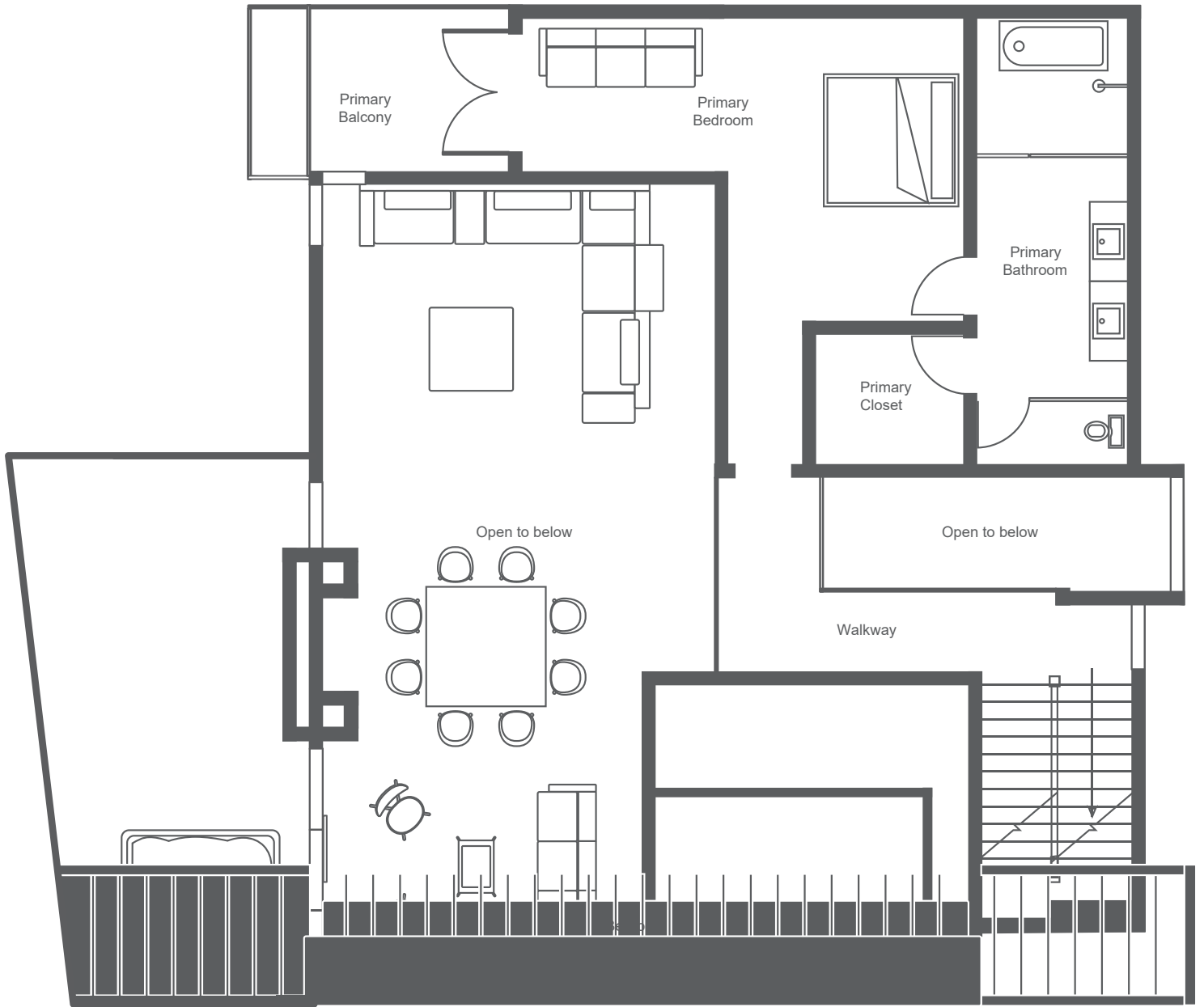


SKYLINE – HOME THREE  
SECOND FLOOR PLAN



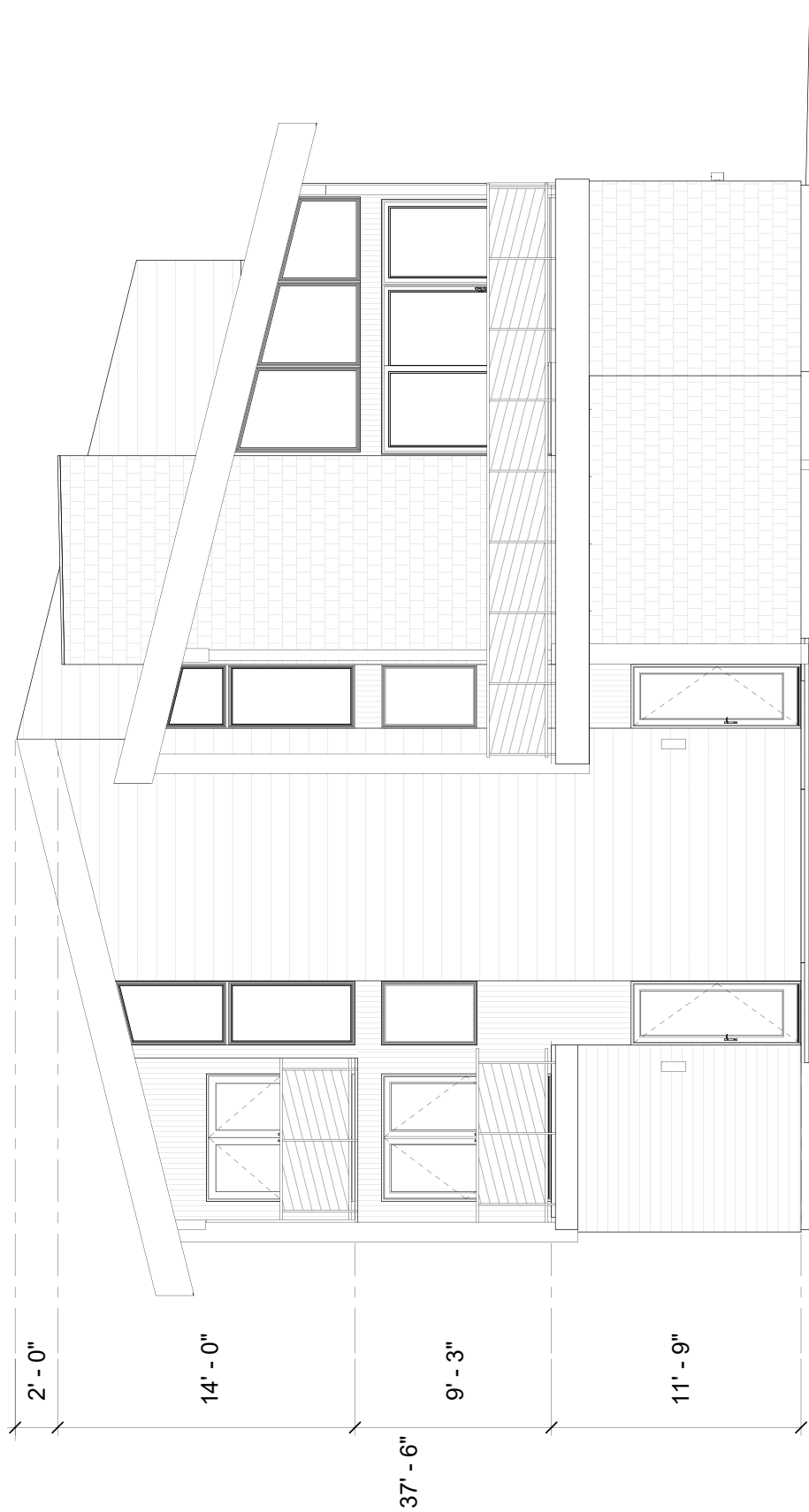
The developer reserves the right to make modifications. All dimensions and areas shown on this plan are not to scale and are approximate. "As built" dimensions and areas may vary from those shown. Broker/Agent does not guarantee the accuracy of the square footage, lot size or other information concerning the conditions or features of the property provided by the seller or obtained from Public Records or other sources. Buyer is advised to independently verify the accuracy of all information through personal inspection and with appropriate professionals.

SKYLINE – HOME THREE  
THIRD FLOOR PLAN



The developer reserves the right to make modifications. All dimensions and areas shown on this plan are not to scale and are approximate. "As built" dimensions and areas may vary from those shown. Broker/Agent does not guarantee the accuracy of the square footage, lot size or other information concerning the conditions or features of the property provided by the seller or obtained from Public Records or other sources. Buyer is advised to independently verify the accuracy of all information through personal inspection and with appropriate professionals.

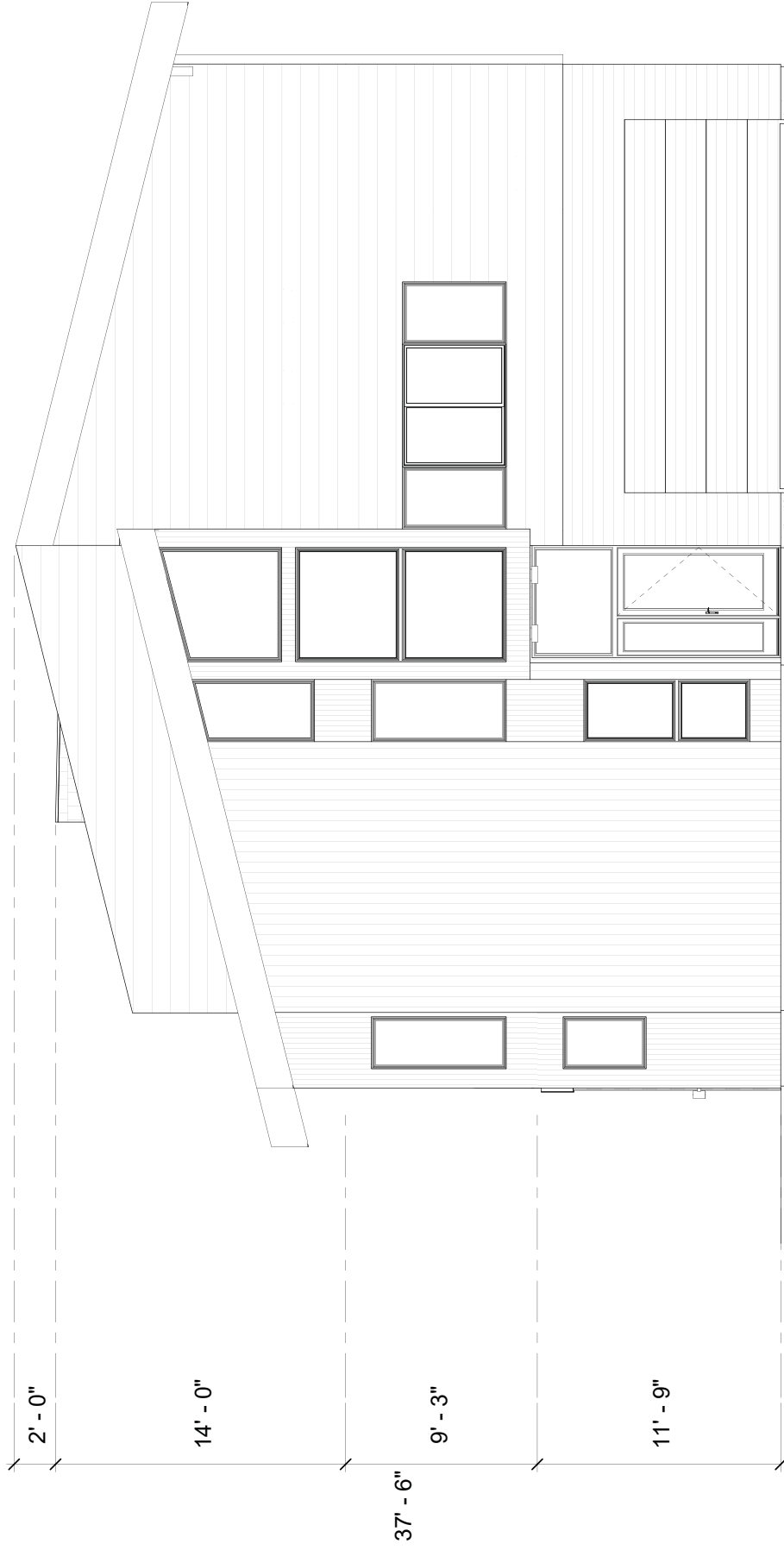




## ELEVATION - WEST (REAR)

HOME THREE - THE RESERVE  
 MAMMOTH LAKES, CA 93546

The developer reserves the right to make modifications. All dimensions and areas shown on this plan are not to scale and are approximate. "As built" dimensions and areas may vary from those shown. Broker/Agent does not guarantee the accuracy of the square footage, lot size or other information concerning the conditions or features of the property provided by the seller or obtained from Public Records or other sources. Buyer is advised to independently verify the accuracy of all information through personal inspection and with appropriate professionals.

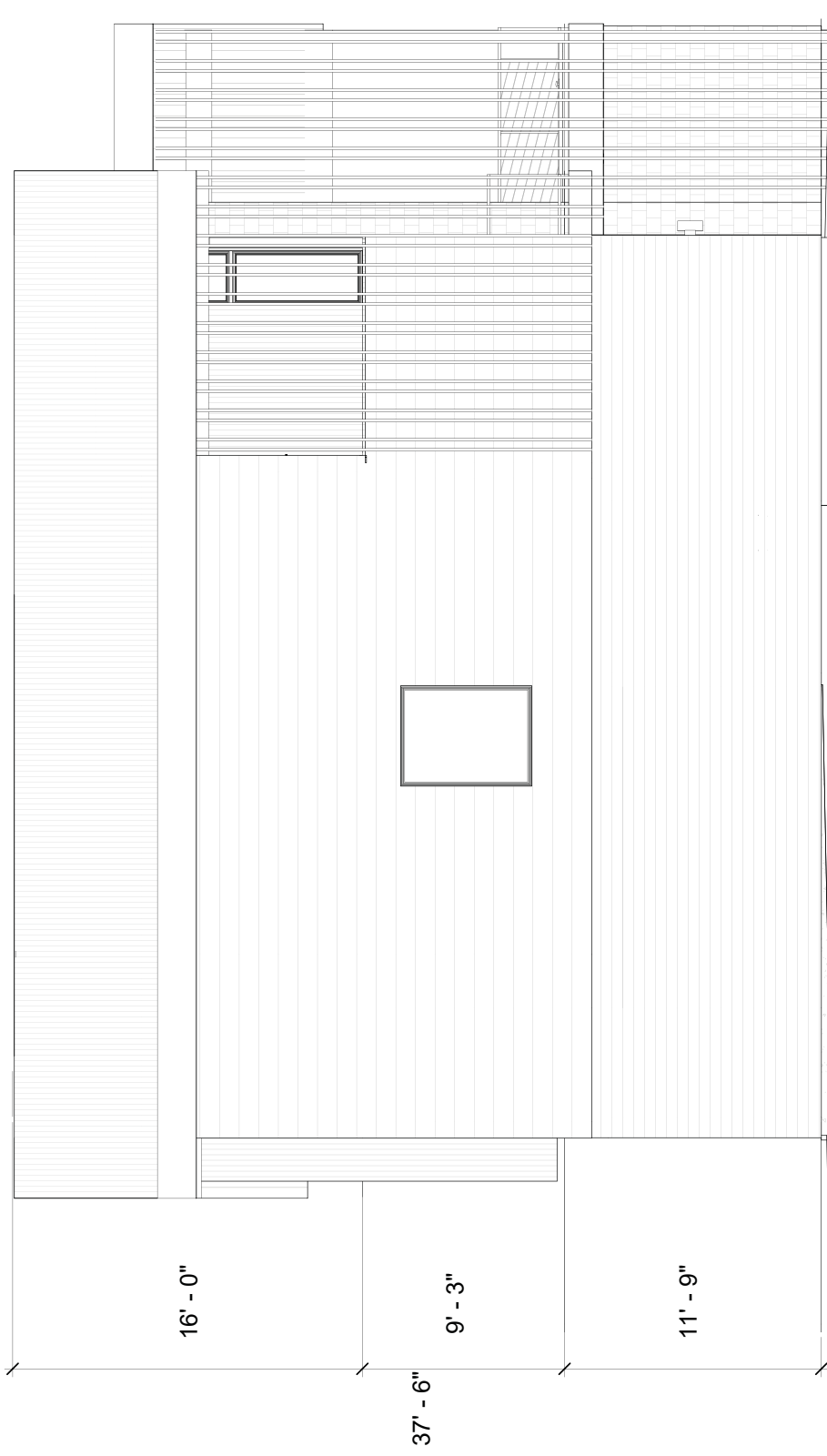


## ELEVATION - EAST (FRONT)

HOME THREE - THE RESERVE  
 MAMMOTH LAKES, CA 93546

The developer reserves the right to make modifications. All dimensions and areas shown on this plan are not to scale and are approximate. "As built" dimensions and areas may vary from those shown. Broker/Agent does not guarantee the accuracy of the square footage, lot size or other information concerning the conditions or features of the property provided by the seller or obtained from Public Records or other sources. Buyer is advised to independently verify the accuracy of all information through personal inspection and with appropriate professionals.

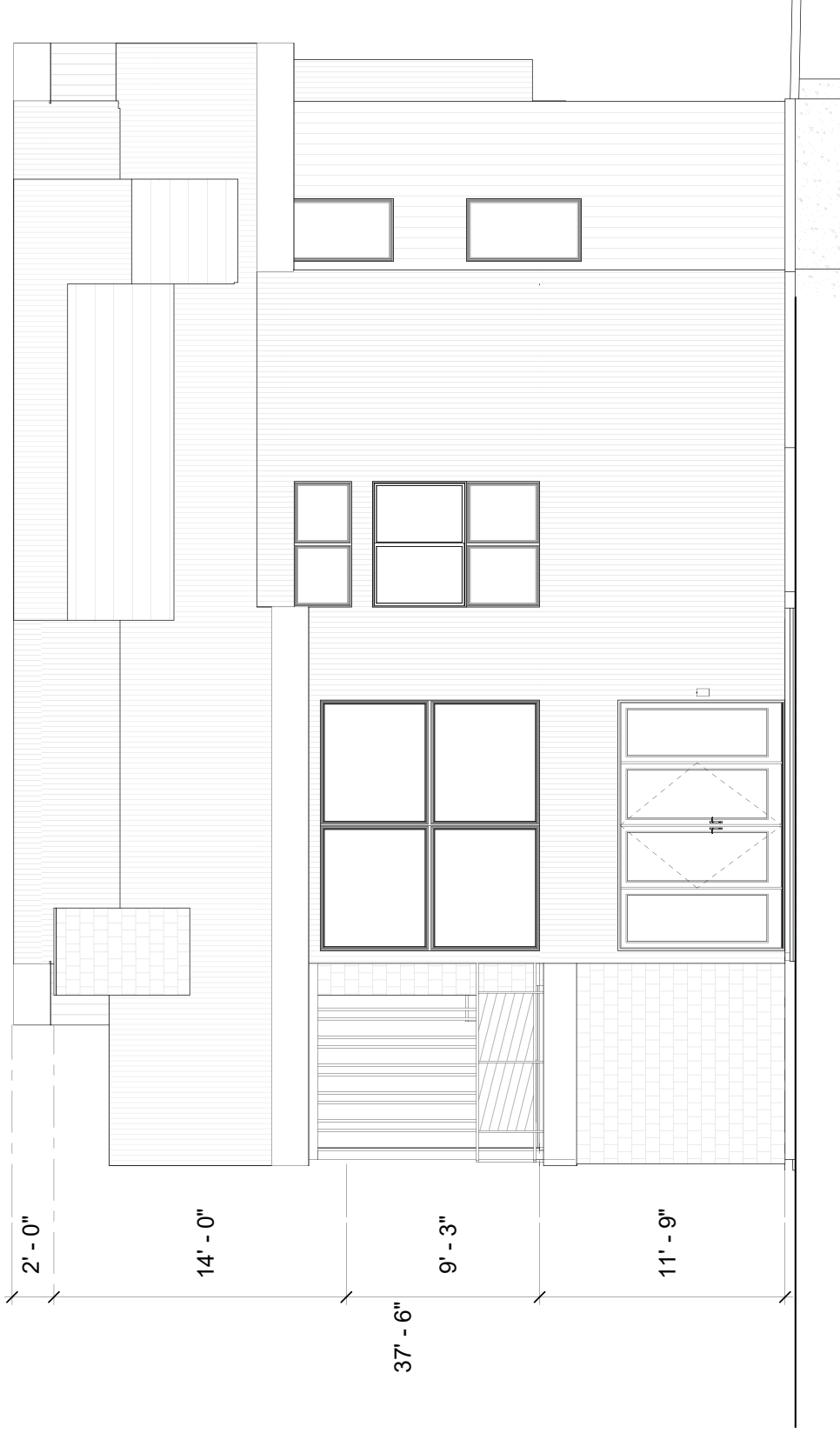




## ELEVATION - NORTH (SIDE)

HOME THREE - THE RESERVE  
MAMMOTH LAKES, CA 93546

The developer reserves the right to make modifications. All dimensions and areas shown on this plan are not to scale and are approximate. "As built" dimensions and areas may vary from those shown. Broker/Agent does not guarantee the accuracy of the square footage, lot size or other information concerning the conditions or features of the property provided by the seller or obtained from Public Records or other sources. Buyer is advised to independently verify the accuracy of all information through personal inspection and with appropriate professionals.



## ELEVATION - SOUTH (SIDE)

HOME THREE - THE RESERVE  
 MAMMOTH LAKES, CA 93546

The developer reserves the right to make modifications. All dimensions and areas shown on this plan are not to scale and are approximate. "As built" dimensions and areas may vary from those shown. Broker/Agent does not guarantee the accuracy of the square footage, lot size or other information concerning the conditions or features of the property provided by the seller or obtained from Public Records or other sources. Buyer is advised to independently verify the accuracy of all information through personal inspection and with appropriate professionals.





# THE RESERVE

MAMMOTH LAKES

[thereservemammoth.com](http://thereservemammoth.com)

All renderings and illustrative maps are conceptual only and subject to change. The developer reserves the right to make any modifications and changes as deemed necessary. Dimensions, sizes, specifications, furnishings, layouts, and materials are approximate only and subject to change without notice. Window sizes, layouts, configurations and ceiling heights may vary from home to home. Prices are subject to change without notice. Errors & omissions excepted. Information not verified or guaranteed. If your property is currently listed with a Broker, this is not intended as a solicitation. 